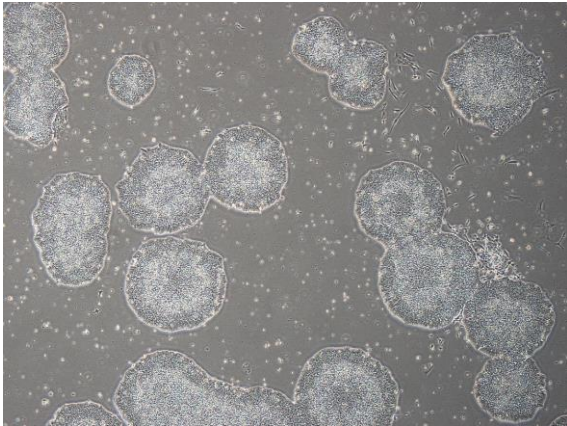
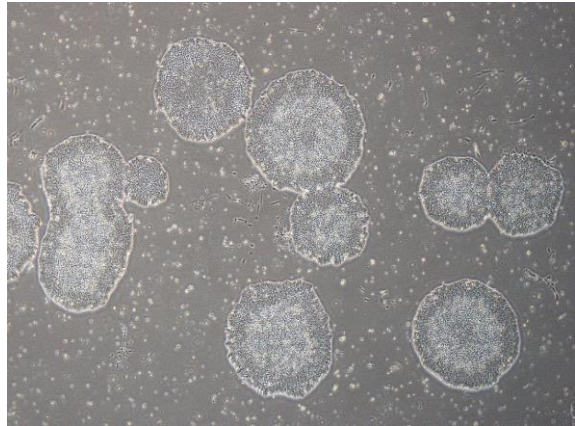


【 CiRA-j-1223 】 Morphology of iPSC colonies

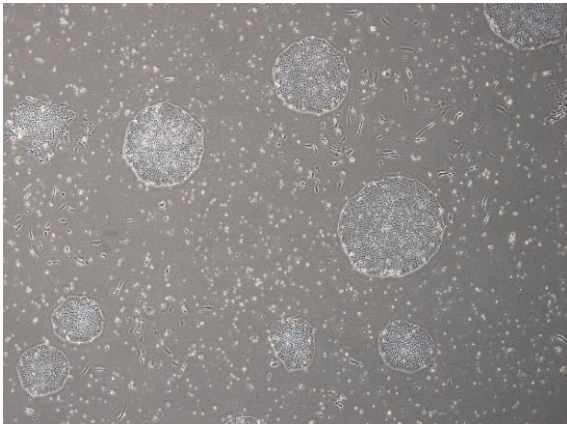
CiRA-j-1223-A: passage-2



CiRA-j-1223-B: passage-3



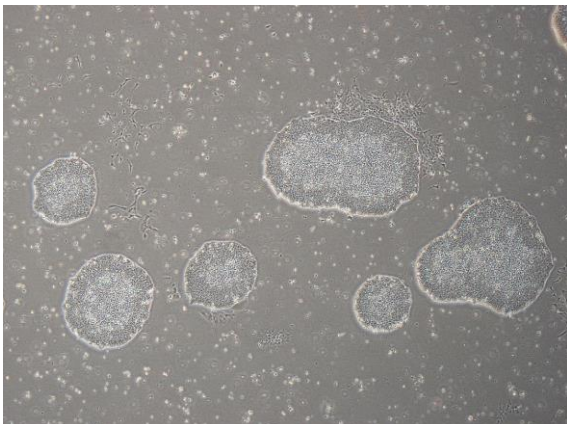
CiRA-j-1223-C: passage-3



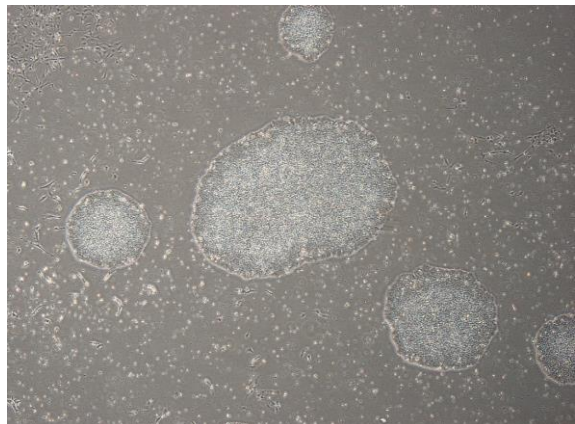
CiRA-j-1223-D: passage-3



CiRA-j-1223-E: passage-3



CiRA-j-1223-F: passage-3



(All images were captured at 4x magnification)